

**FAT
QUARTER
FRIENDLY**

MOTHER'S LOVE COMFORT PILLOW

Finished Size: Approx. 6" x 14"
depending upon how full you stuff the pillow

This simply wonderful pillow shaped like a bone makes a quick and easy gift. The pillow shown below uses Alexander Henry Fabrics' A Mother's Love Collection. The focal print is full of wonderful scenes of women comforting babies, quilting a quilt, anticipating birth, supporting children and embracing three generations. You can use up to four fabrics in this pillow since there are four separate bone shaped panels used. It's also great for using with novelty fabrics. Isolate your favorite motifs on different sides of the pillow.

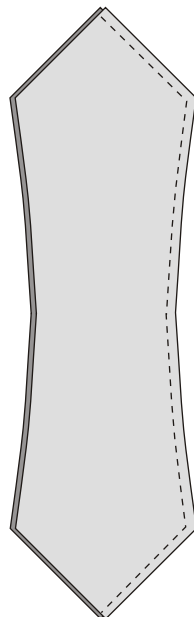
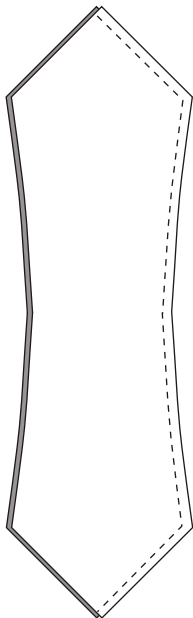


You can use up to 4 different fabrics in one pillow!

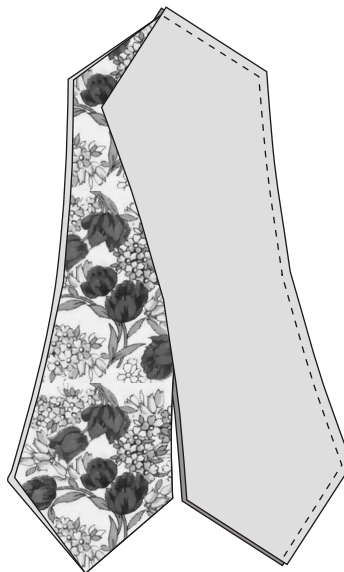
The ends look remarkably like quarter square triangles!



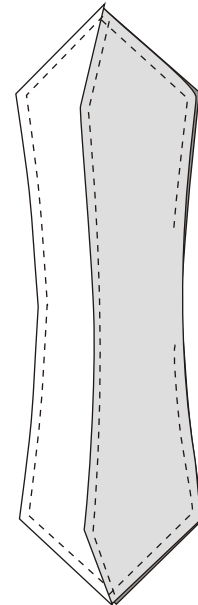
- 1- Sew the bone shapes together in sets of two.
- 2- Turn one of the sets right side out.



- 3- Slip the right side out set inside of the wrong side out set.
- 4- Match up the cross seams at the top and bottom points of the bones shapes. Fold the seam allowances opposite each other at the intersecting point.
- 5- Sew the two sets together leaving an approx. 3"- 4" opening.

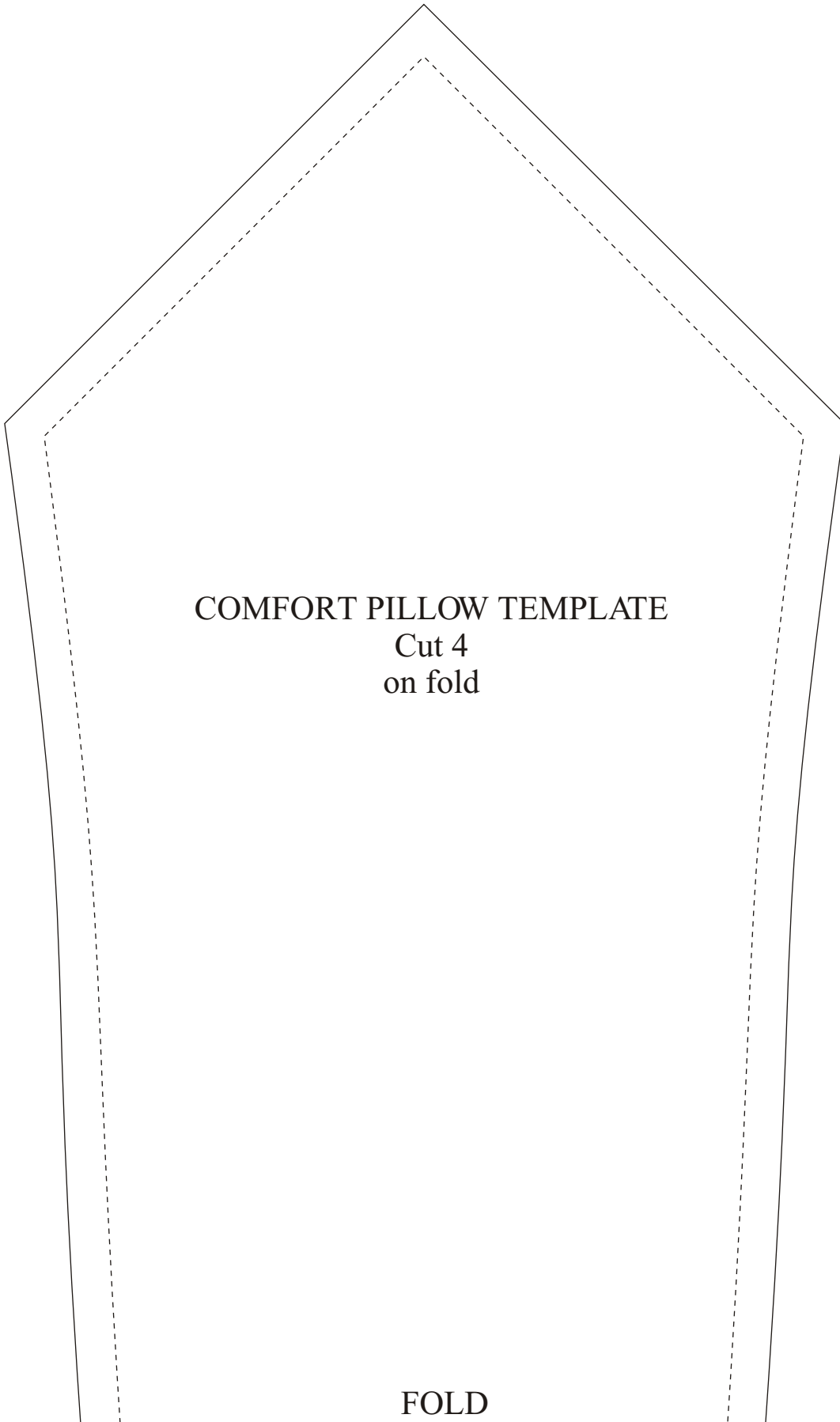


- 6- Turn right side out and stuff with polyester stuffing (I love Soft Touch Stuffing, it bounces back very well) or buckwheat for an herbal approach.
- 7- Turn the seam allowances of the opening inside of the pillow. Whip stitch the opening closed with tiny, hidden stitches. ENJOY!



NOTE: Please read the entire pattern carefully. Every effort has been made to ensure the accuracy of this pattern. Use a 1/4" seam allowance unless otherwise stated. Fabric images used in the presentation of this pattern are given as placement guides. They are not necessarily true to the scale of the original fabrics. Thank you for choosing ConnectingThreads.com for your quilting needs.

Item #991110



COMFORT PILLOW TEMPLATE

Cut 4
on fold

FOLD